



Beaufort County Public Works Stormwater Infrastructure Project Summary

Project Summary: Forrest Field Subdivision / St. Pauls Road Phase IV

Project #: 2009-154

Completed: Jun-09

Narrative Description of Project:

Project improved 195 L.F. of ditches and jetted crossline pipe. Grubbed and cleared 130 L.F. of outfall ditch. Cleaned out 180 L.F. of outfall ditch and 15 L.F. of roadside ditch. Jetted (1) crossline pipe. Installed sod and hydroseeded for erosion control.

Material Cost, Rental Equipment Summary, and Labor

Material	Unit	Cost/Unit	Qty	Cost
10-10-10 Fertilizer	bag	\$12.83	1.0	\$12.83
Hydrogel	cup	\$2.82	1.0	\$2.82
Hydromulch	bale	\$16.75	2.0	\$33.50
Bermuda Hulled Grass Seed	bag	\$125.00	1.0	\$125.00
Centipeded Sod	pallet	\$100.00	2.0	\$200.00
Water	gallon	\$0.01	1,700	\$17.00
Pin Flags	each	\$0.06	5.0	\$0.30
Debris Disposal Greenspace	ton	\$16.00	26.2	\$418.56
Gas	gallon	\$2.42	29.0	\$70.18
Diesel	gallon	\$2.21	127.0	\$280.67
Labor	hours		202.0	\$6,907.59
Total Cost of Materials, Rental Equip., and Labor				\$8,068.45

Note: Labor cost includes the employee's salary plus fringe benefits.

Equipment Cost

Item	Asset No.	Cost/Hour	Hrs.	Cost
Komatsu Mini Excavator	23000	\$18.65	5.0	\$93.25
Bobcat T300	22847	\$20.10	3.0	\$60.30
JCB Backhoe	23364	\$40.53	6.0	\$243.18
Hydroseeder	18909	\$10.70	2.5	\$26.75
Vacuum Truck	22812	\$20.30	5.0	\$101.50
Dump Trucks		\$16.68	42.0	\$700.56
Pickup Trucks		\$5.43	51.0	\$276.93
Total Equipment Cost				\$1,502.47

Cost/hour excludes fuel cost.

Total Cost: \$9,570.92

Site Photographs

Before

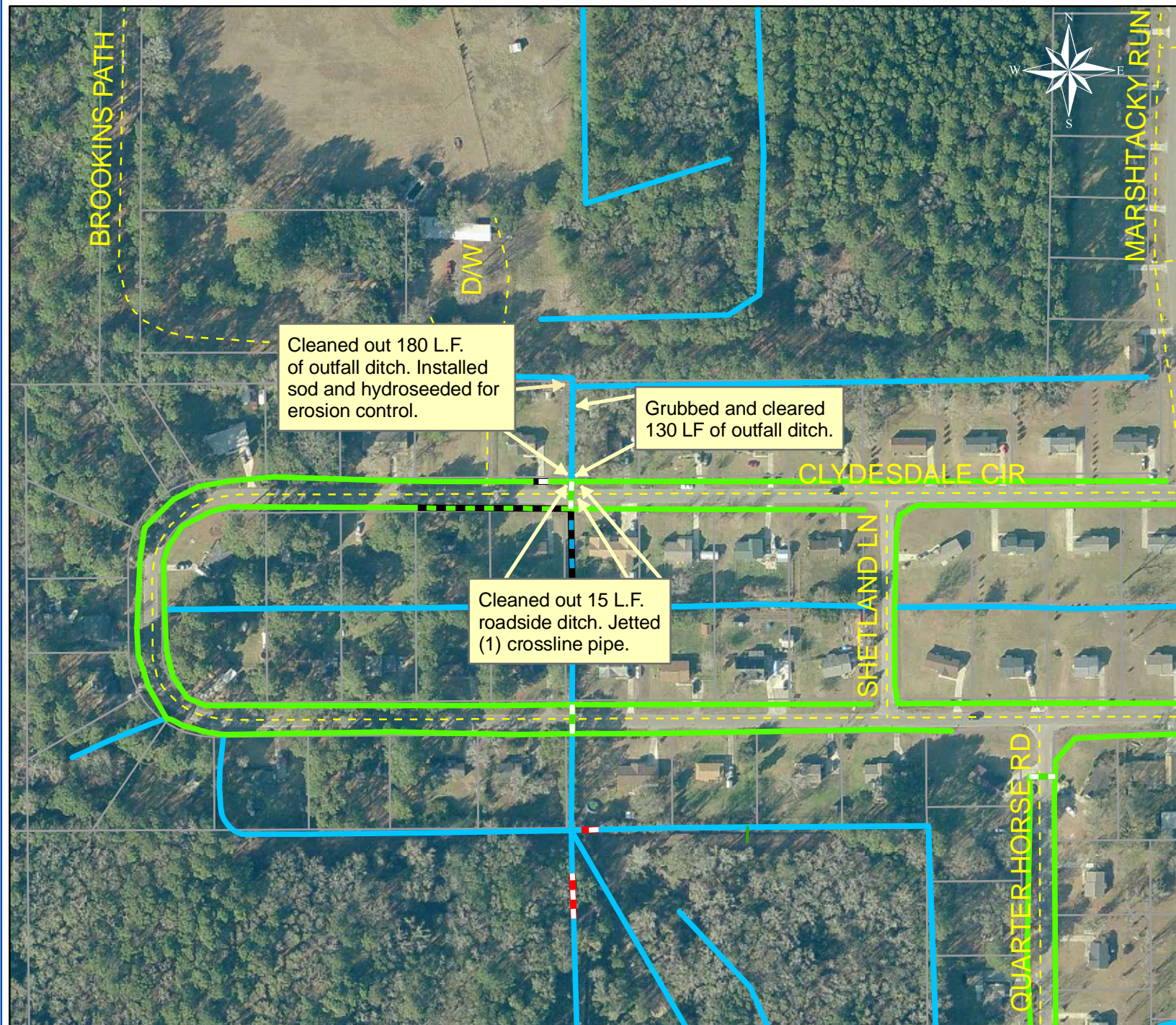


During



After





Project: Forrest
Field Subdivision/
St. Pauls Road
Phase IV

Activity:
Ditch Maintenance

Project #:
2009-154

Township:
Port Royal Island

Completed:
June 2009

Legend

Drainage Type

- River
- Stream
- Outfall
- Lateral
- Roadside
- Roadside Piped
- Crossline
- D/W
- Access
- Piped
- Bleeder
- Parcels

0 55 110 220 330 440
Feet

1 inch equals 204 feet

Prepared By: BC Stormwater Management Utility

Date Print: 8/31/2009

File: C:\sethdata\projects\projectmaps\Forrest Field/St. Pauls Road phase IV_2009_154